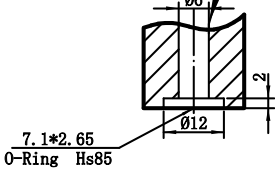
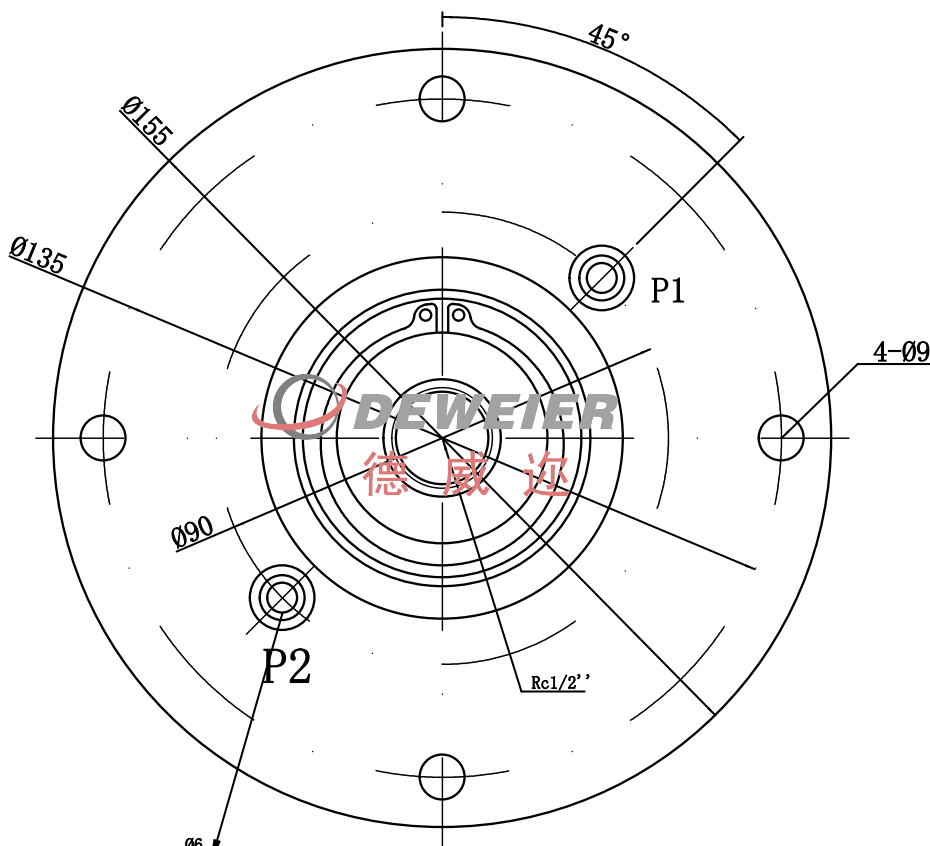
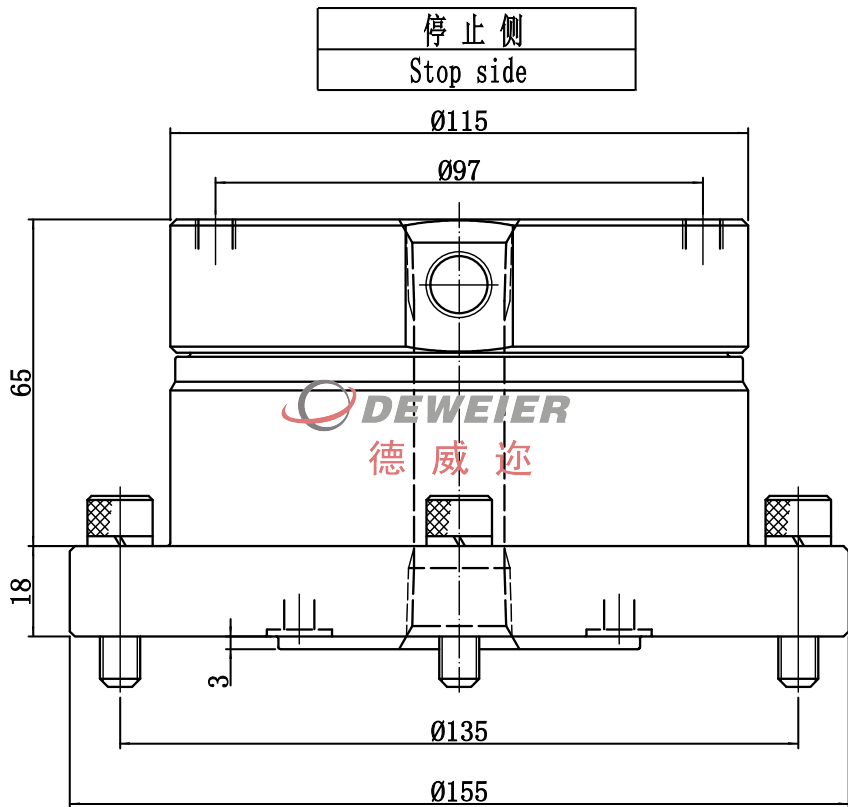
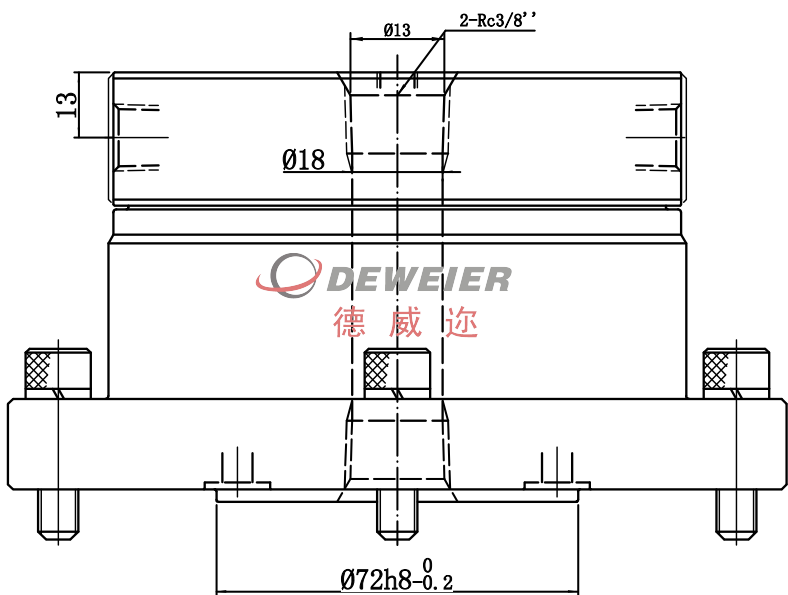
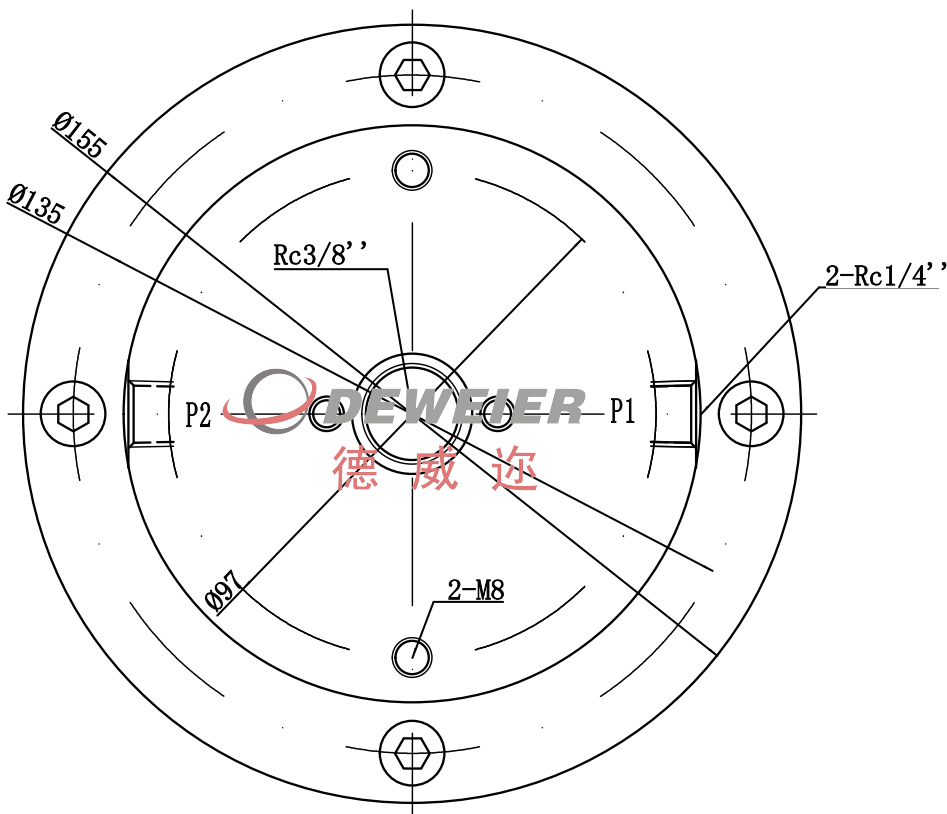


单转盘旋转接头—法兰型
主体材质为：机铝

单转盘法兰盘型的主体安装部呈法兰盘形状，降低了整体高度，机械硬铝材质，减轻产品重量结构紧凑。
2回路+1中央供给口，各回路可独立使用。
请通过座垫式配管从主体法兰盘侧供油。

Single turntable rotary joint - flange type
The main material is: aluminum

The main body mounting part of the single turntable flange type has a flange shape, which reduces the overall height and is mechanically hard aluminum material, which reduces the weight of the product and is compact.
2 loop + 1 central supply port, each circuit can be used independently.
Please supply oil from the side of the main flange by seat-type piping.



旋转侧
Rotating side



技术参数表 Operating Parameter	
最高压力 Max. pressure:	12MPa;
最高转速 Max. speed:	200RPM.
使用温度 Operating temperature:	-20℃--+80℃
适用介质 Fluid used:	液压油/冷却水/压缩空气 Hydraulic oil /water/air
技术参数数据为最大值，不能同时使用； The technical parameter data is the maximum value and cannot be used at the same time;	



标记	处数	分区	更改文件号	签名	年、月、日
设计	Andy Yu	2015-10-31	标准化		
审核					
工艺			批准		

液压旋转接头(机铝)

Rotary joint (Aluminum shell)

枣庄市德威迩机械科技有限公司

DRBF0212-Rc1/4'

阶段标记	重量	比例
		1:1.5

共 1 张 第 1 张