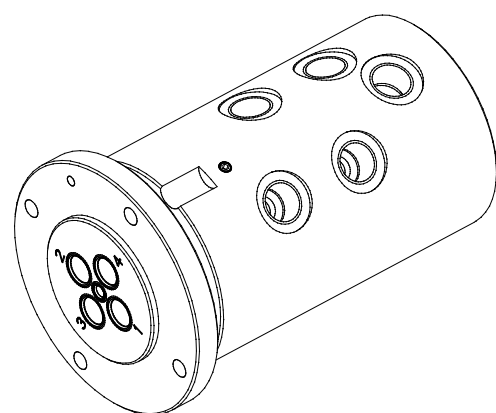
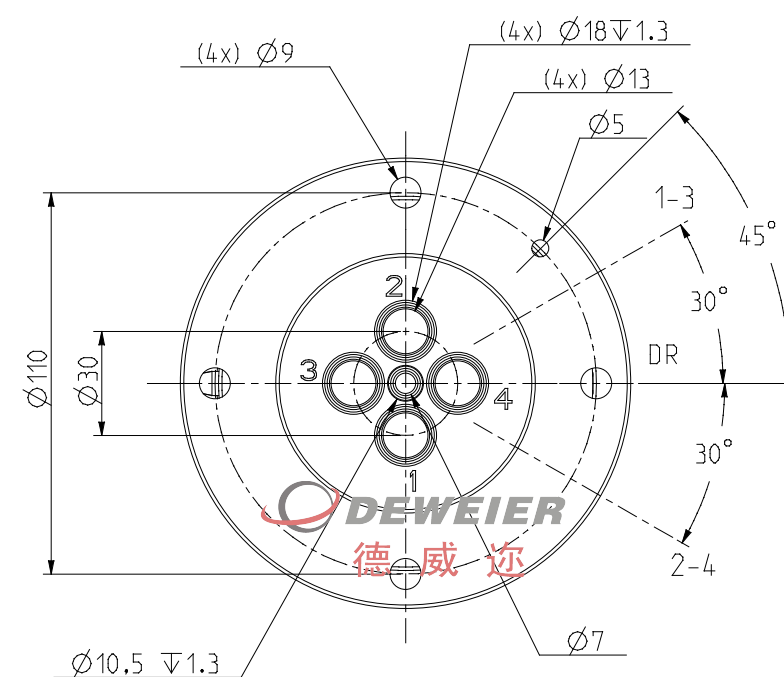
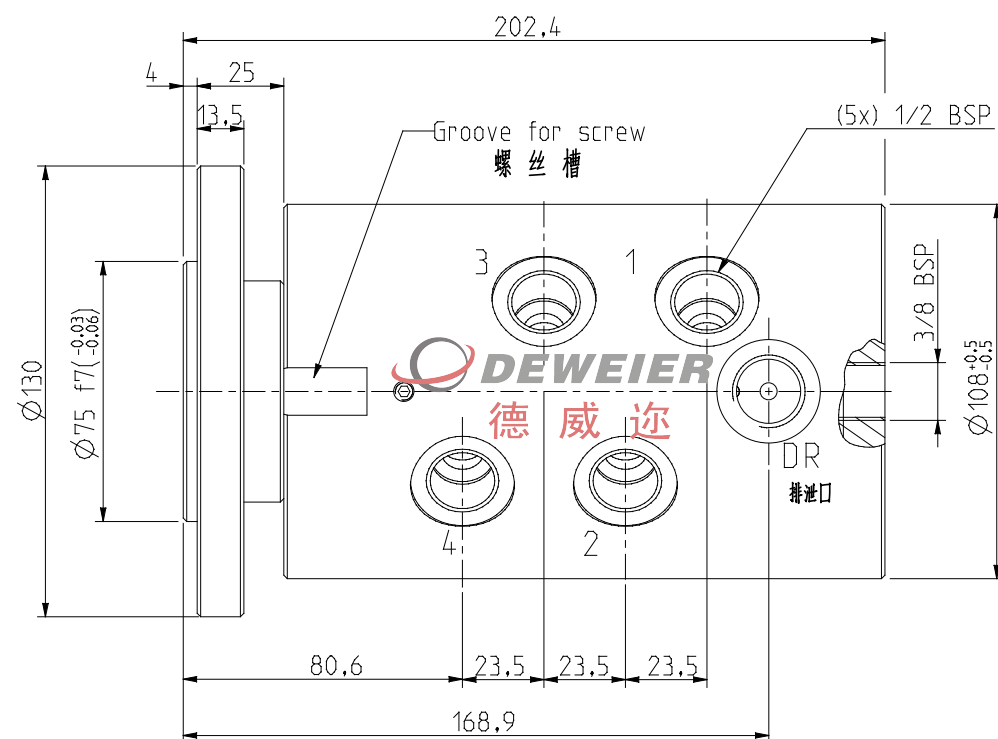


DRM0415-1800-38F



含中央供给口: 4+1

Central supply port : 4+1

枣庄市德威迩机械科技有限公司

Dewel Machinery Technology Co., Ltd.

技术参数 TECHNICAL PARAMETERS

使用参数 Working parameters

MAX. PRESSURE	25MPa; <25Bar>
MAX. SPEED	250RPM;
TEMPERATURE	-20℃----+80℃
MEDIA TYPE 介质	Hydraulic oil/water/air 液压油/冷却水/压缩空气

介质 Fluid	压力 Pressure	温度 Temperature	转速 Rotating speed
空气 Air	1.0MPa:	80℃	100RPM
水 Water	4.0MPa:	80℃	30RPM
液压油 Hydraulic oil	7.0MPa:	80℃	150RPM
	25MPa:	80℃	60RPM
德威迩公司独创的长寿命旋转接头, 供出口数量可选2、3、4、5、6个出口			
DRM uses a professionally developed low-friction seal to achieve low torque and smooth rotation. This joint is a long-life rotary joint that is unique in its combination of high rigidity, high durability and high sealing.			

备注: 技术参数数据为最大值, 并不能同时使用;
The technical parameter data is the maximum value and cannot be used at the same time.



德威迩企业官网



德威迩业务号

订货编号 Order-No.

Copper 铜壳

Aluminum 铝壳

DRM0415-1801-38F

DRM0415-1802-38F

适用介质: 高压水/液压油等

Applicable medium:
High pressure water
hydraulic oil

适用介质: 压缩空气/液压油等

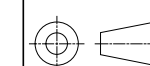
Applicable medium:
compressed air
hydraulic oil

多通道旋转接头
Multi-Passage Rotary joint

E-mail: sddeweier88@163.com

DEWEIER
德威迩

www.sddeweier.com



TEL: +86 632 5822778
TEL: +86 632 5832779

P/N: DRM0415-1800-38F