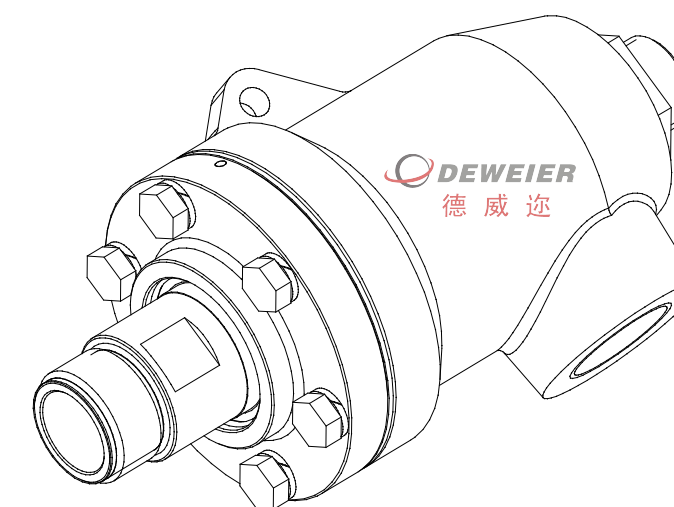
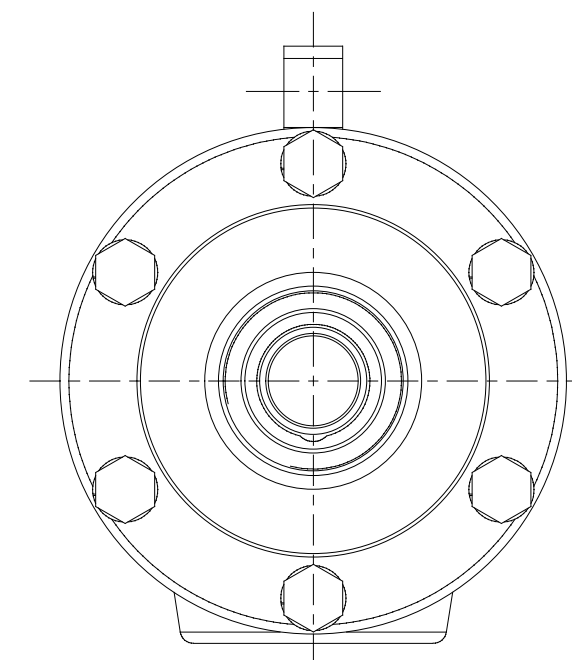
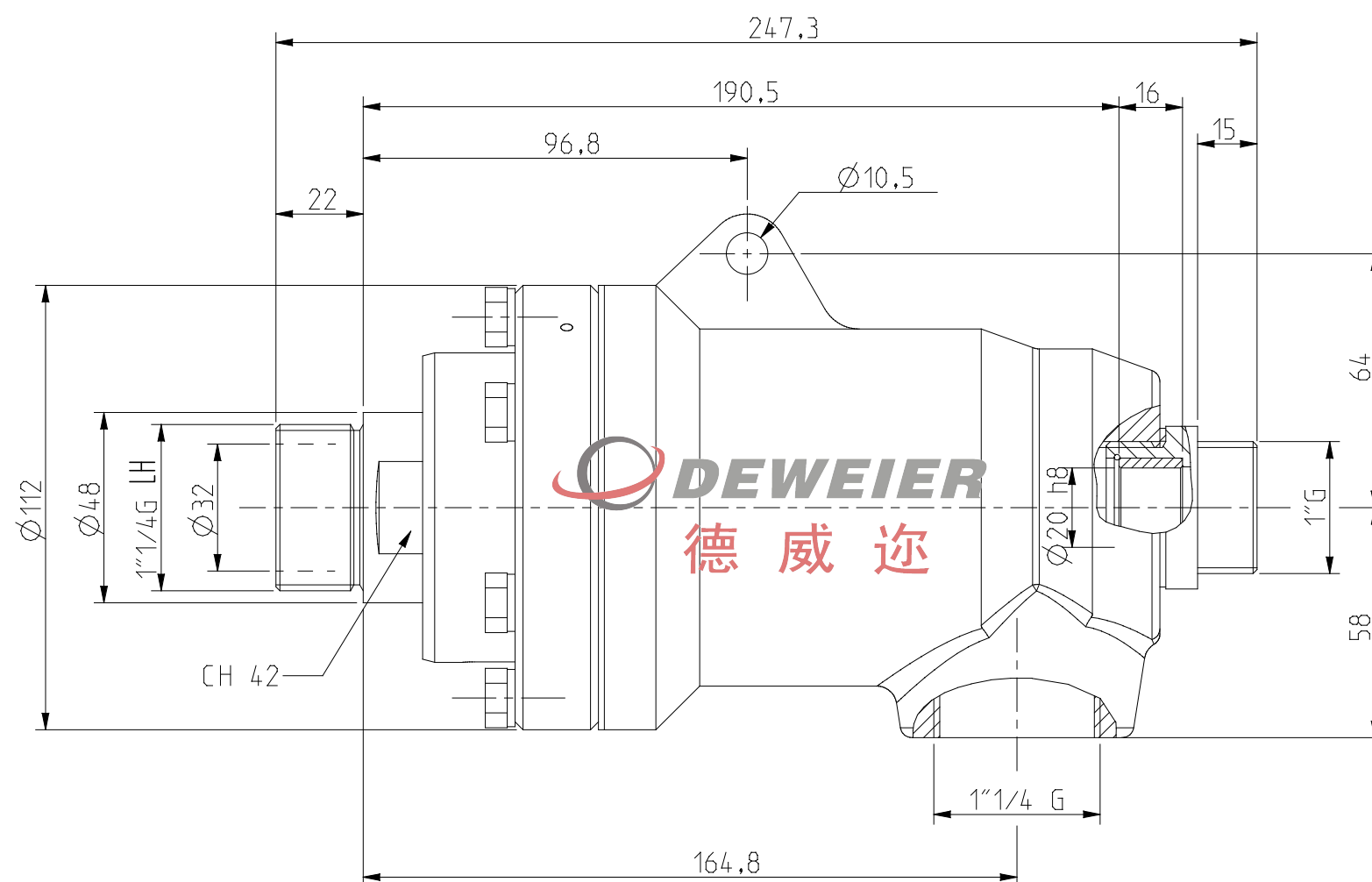


170-XZE-0ESS



枣庄市德威迩机械科技有限公司

Dewel Machinery Technology Co., Ltd.

技术参数 TECHNICAL PARAMETERS		使用参数 Working parameters			
MAX. PRESSURE	2.0MPa; (20Bar)	介质 Fluid	压力 Pressure	温度 Temperature	转速 Rotating speed
MAX. SPEED	100RPM;	蒸汽 Steam	2.0MPa;	240℃	80RPM
TEMPERATURE	-20℃----+280℃	热油 Hot oil	4.0MPa;	280℃	80RPM
MEDIA TYPE 介质	Steam/hot oil	Convex sealing design with sealing velocity 4 times higher than common structure. mized carbon guide separation to provide high stability for vibrant equipment. Anti-impurity structure for prolonged service life. High-temp-resistant alloy spring and antimony carbon rings for prolonged operation in hot oil application. Free from constant maintenance and lubrication, easy to repair.			
	蒸汽/热油等				

备注：技术参数数据为最大值,并不能同时使用；

The technical parameter data is the maximum value and cannot be used at the same time.

高温旋转接头
High temperature rotary joint
E-mail: sddeweier88@163.com



www.sddeweier.com



TEL : +86 632 5822778
TEL : +86 632 5832779

P/N : S530-32X-04L